

Art. 6923/9345 - sim. DIN 6923

Dado esagonale

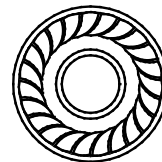
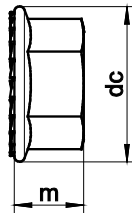
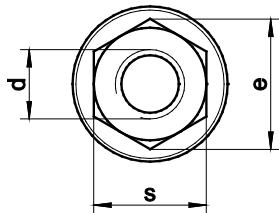
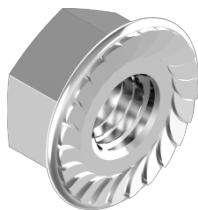
con flangia zigrinata

Hexagon nuts

with flange and serration

disponibile in [AISI 304](#) / [AISI 316](#)

available in [AISI 304](#) / [AISI 316](#)



d	dc	m	s	e
M4	10	4,65	7	7,66
M5	11,8	4,7	8	8,79
M6	14,2	5,7	10	11,05
M8	17,9	7,64	13	14,38
M10	21,8	9,64	15	17,77
M12	26	11,57	18	20,03
M16	34,5	15,3	24	26,75